

Swedish Forest Resources – The Sustainable Alternative to Fossil-Based Plastics

Renato Cosic
CEO
Woodcomposite Sweden AB

part of Amwood Group

ASPA  PULP HYLTE  PAPER **SWEDEN TIMBER**



Woodcomposite Sweden



DuraSense®



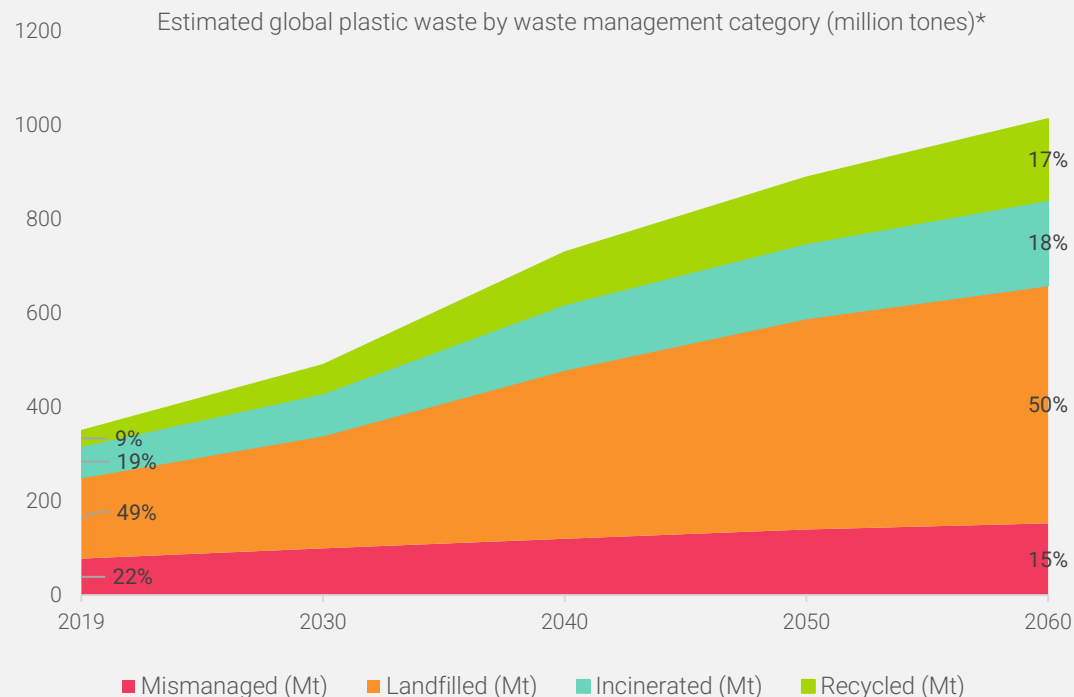
Toll Compounding



Laboratory Services



Global Plastic Waste Outlook – Why We Need More Than Recycling



*after disposal of recycling residues and litter collection
Source: OECD Global Plastics Outlook. Statista.

- **Recycling is important, but not enough to solve the plastic crisis**
- 2.2 billion tons CO₂/year, plus pollution, microplastics, and fossil dependency
- >90% of GHG emissions occur during the extraction and production phase
- **Bio-based materials + better use-phase design are essential – supported by ambitious EU regulations (ESPR, Circular Economy Act, Bioeconomy Strategy, PPWR)**



The Strength of Swedish Forest Resources

- **Renewable & Abundant**
28 million hectares of forest – covering 70% of Sweden’s land area – have doubled in volume over the last 70 years while being actively utilized
- **Massive Carbon Sink**
Annual forest growth sequesters >140 million tonnes of CO₂ – more than 2× Sweden’s total emissions, making it a strong net climate benefit
- **Strong Technical Performance**
Wood fibers act as natural reinforcement in polymers, improving mechanical properties
- **High Fossil Replacement Potential**
Already capable of replacing large volumes of fossil-based plastics today, while generating valuable biomass and by-products
- **Circular & Efficient**
Used in major applications with high material efficiency and strong end-of-life options (recycling + bioenergy)

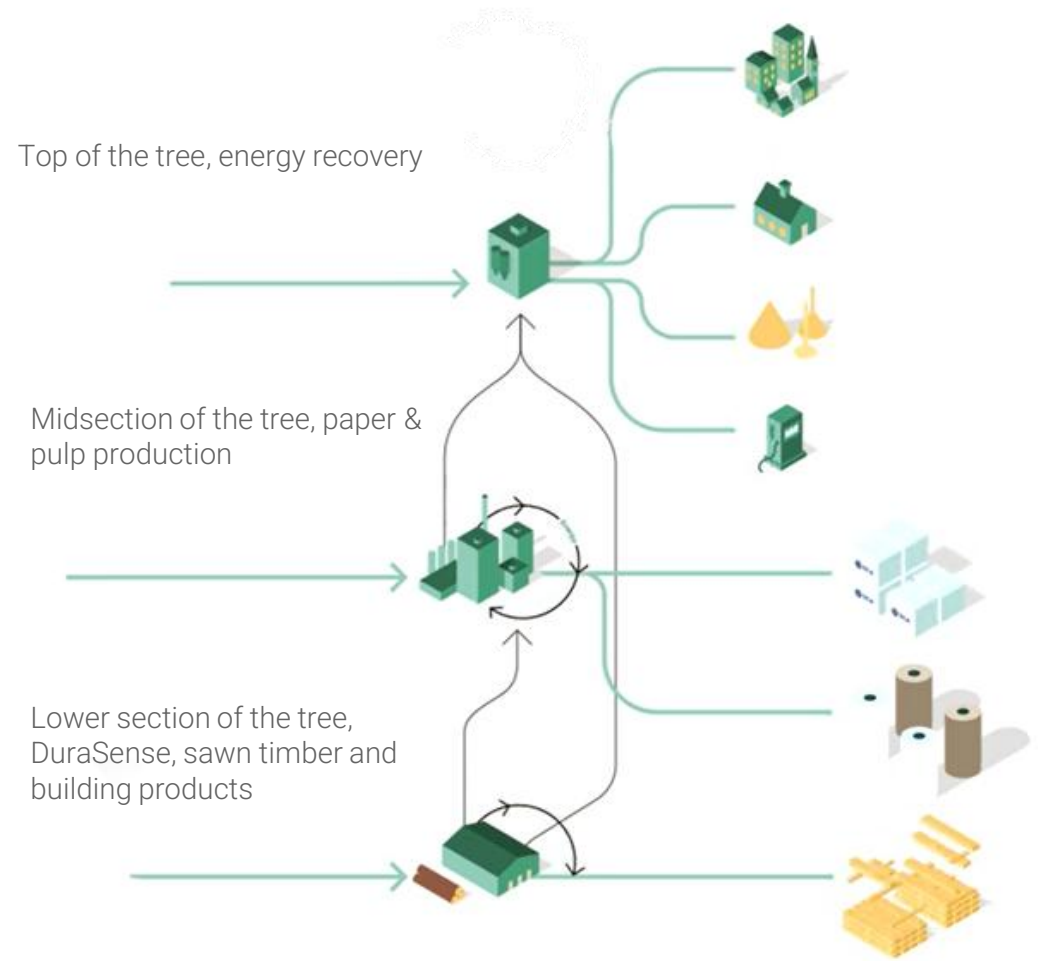
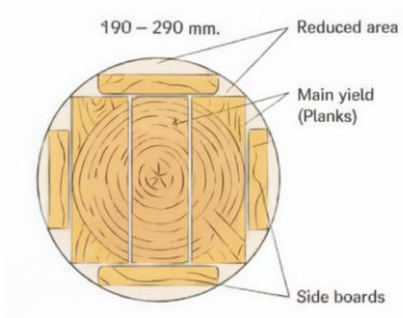


Maximum Resource Efficiency – Using Every Part of the Tree



SWEDEN TIMBER

HYLTE PAPER ASPA PULP



DuraSense® – A Blend of Nordic Wood and Advanced Polymers

Polymers

(Bio)-Polypropylene (PP) or Bio-Polyethylene (PE). Recycled, Biodegradable and conventional polymer options



20-55% Nordic Wood fibres

Milled fibres, kraft pulp, all from Nordic softwood



Meeting Diverse Technical Demands with **Pure**, **Plus**, and **Prime**

Pure



Purest grades with a low amount of additives

Plus



Performance enhanced to be flexible and have enhanced impact resistance

Prime

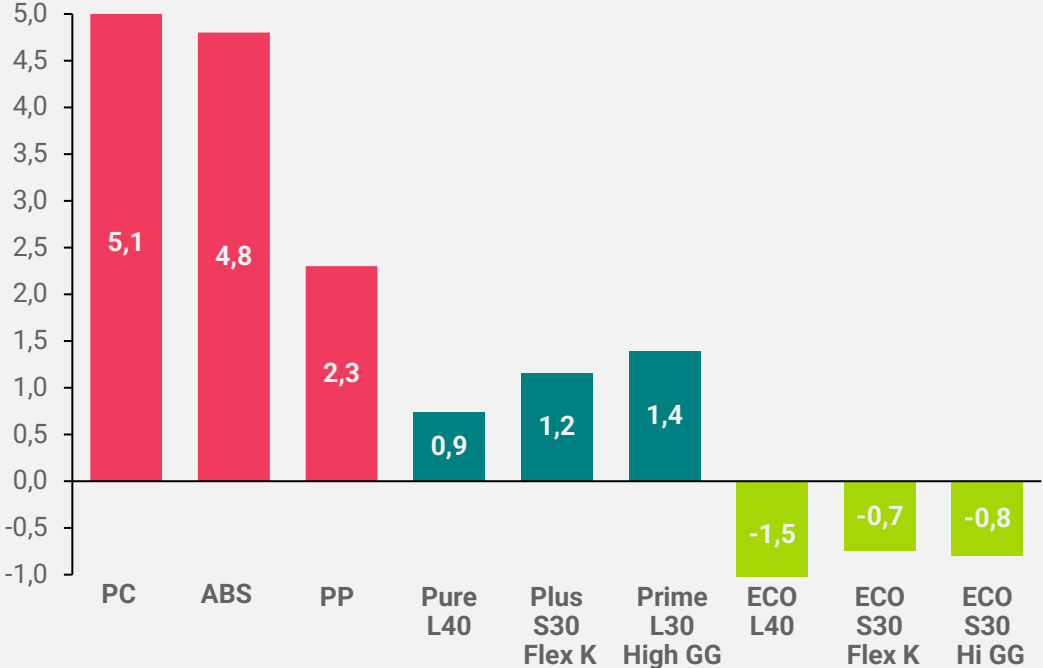


Our highest performing grades for demanding applications, developed to replace engineered plastics.



CO2 Emissions Compared to Traditional Plastics

GWP [Kg CO2 eq.]



Note: Calculated based on ISO 14067

- Significant CO2 reductions**
Choosing DuraSense to replace conventional plastics will generate extensive CO2 savings
- LCA comparison data available for all grades**
We provide third party verified LCA data reports
- Benefits go beyond CO2 reductions**
Wood fiber composites exhibit enhanced mechanical properties after recycling, enabling higher recycle content in end products





Smart Set

Partnering in Circular Take Away Packaging Initiative



The new era of
Take Away Packaging



Thank you!

Renato Cosic

Woodcomposite Sweden AB

Renato.cosic@woodcomposite.se

www.woodcompounds.com

For further reading:

[Skogforsk: Climate impact of Swedish forestry - Skogforsk - Forestry Research Institute of Sweden](#)

[SLU: skogsdata_2025_web.pdf](#)

[OECD: Full Report: Global Plastics Outlook | OECD](#)

www.woodcompounds.com

